



White Paper

Neurodiversity in the workplace: fostering inclusivity through design and awareness

January 2026

Neurodiversity in the workplace: fostering inclusivity through design and awareness

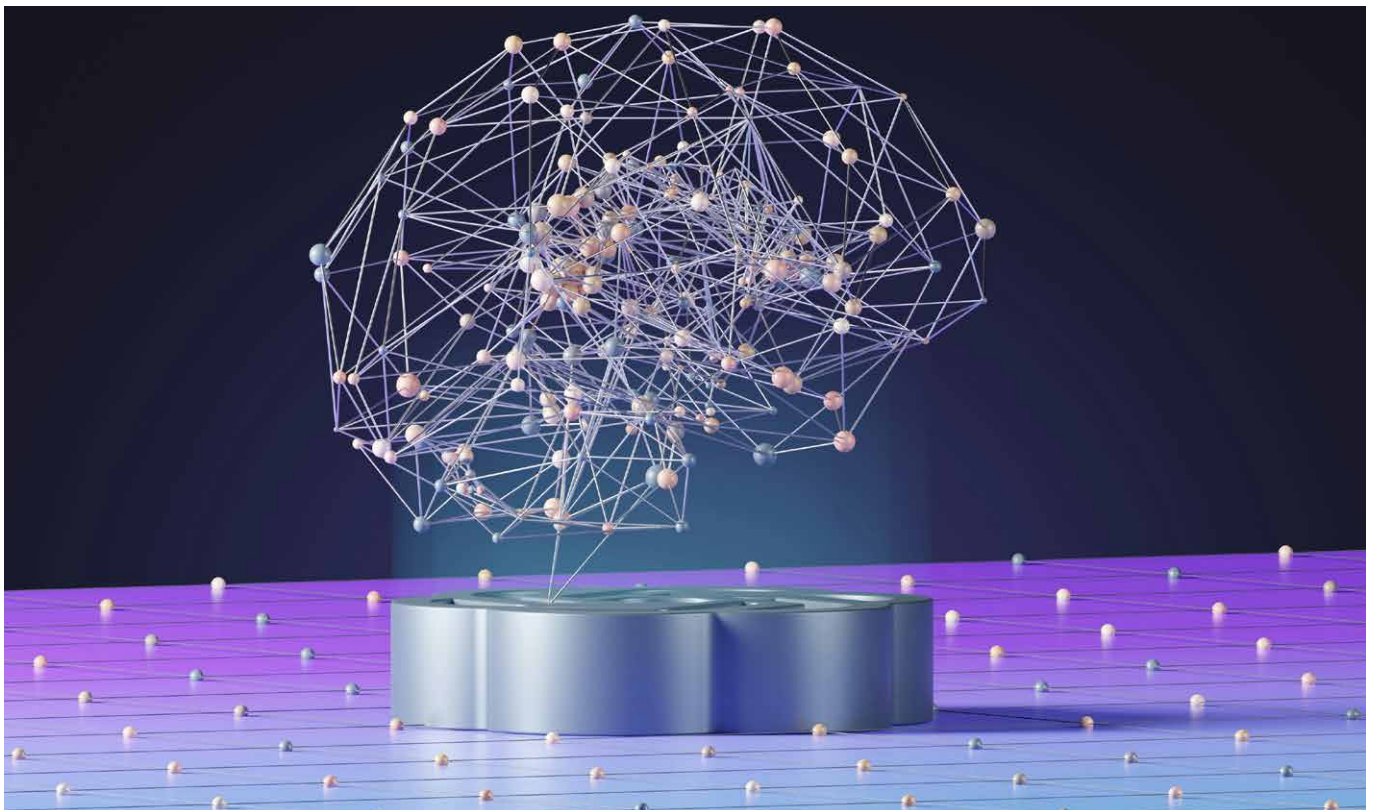
Neurodiversity refers to the natural variation in human brain function and cognitive processing. It encompasses a wide spectrum of neurological differences, including but not limited to conditions such as autism, dyslexia, ADHD and dyspraxia. These differences are not inherently negative or pathological; rather, they reflect the diverse ways in which the human brain functions. Neurodiversity is dynamic and can evolve over time, influenced by age, environment or life experiences.

Currently, an estimated 1 in 7 people in the UK are neurodivergent. Despite this, neurodiversity remains underacknowledged, particularly in the workplace. Physical disabilities often receive priority in efforts to create inclusive environments, leaving neurodivergent employees without the necessary accommodations. To bridge this gap, PAS 6463 – Design for the Mind: Neurodiversity and the Built Environment, provides a framework for developing neuro-inclusive workplaces.

This whitepaper examines the significance of neurodiversity and highlights the benefits of fostering an inclusive environment that supports everyone.

In this whitepaper:

- [1. What is Neurodiversity?](#)
- [2. The importance of raising awareness and prioritising neurodiversity](#)
- [3. Disclosure](#)
- [4. Available guidance](#)



1. What is Neurodiversity?

Neurodiversity is the concept that acknowledges and values the natural diversity of the human brain. Unlike the traditional medical model, which views neurological differences as disorders to be “fixed,” neurodiversity sees these variations as part of the natural spectrum of human cognition. Neurodiverse individuals bring unique strengths, that can contribute to society in creative and innovative ways

Key terms to understand in the context of neurodiversity include:

- **Neurodivergence** refers to individuals whose neurological functioning is different from the norm. This can include those with autism, ADHD, dyslexia, or other cognitive impairments.
- **Neurotypical** describes individuals whose cognitive processing and brain functions align with societal expectations of typical development.
- **Cognitive impairment** is a broad term used to describe various forms of intellectual or cognitive challenges, including difficulties with memory, learning or processing information.



2. The importance of raising awareness and prioritising neurodiversity

Despite its prevalence, neurodiversity often goes unnoticed, particularly in the workplace, where hidden disabilities, such as ADHD or autism, are frequently overlooked in favour of more visible physical disabilities. This oversight is problematic for several reasons, especially as research shows that employees who feel understood and supported in the workplace are more engaged and productive. Creating a neuro-inclusive workplace offers numerous benefits, for both employees and the company, such as:

1. Staff morale and retention

Neurodivergent individuals often face significant challenges when navigating traditional work environments. Without reasonable adjustments or a supportive culture, these employees may struggle to perform at their best. By creating a neuro-inclusive and supportive environment, employers can increase morale and job satisfaction, leading to higher retention rates.

2. Improved workplace environment

A workplace that embraces neurodiversity is inherently more inclusive and welcoming to a wider variety of people. By making accommodations for neurodivergent employees, companies also create a more accessible and supportive environment for everyone, which can lead to stronger collaboration, a more positive atmosphere and increased diversity of thought.

3. Increased productivity

When employees have the resources they need to succeed, productivity naturally increases. By providing neurodivergent employees with the right tools and accommodations through reasonable adjustments, such as noise-cancelling headphones, adjustable lighting or the ability to work in quiet spaces, employers can maximise their potential and improve overall productivity.

4. Improved customer relations

Neurodivergent individuals often have unique perspectives and problem-solving skills that can benefit the company's approach to customer service, marketing and product development. By support neurodivergent employees, companies not only improve internal culture but also enrich their interactions with customers.

5. Prevent discrimination

Workplaces that fail to provide accommodations for neurodivergent individuals may unintentionally engage in discriminatory practices. This can result in legal challenges, significant financial costs, reduced employee morale, and damage the company's reputation. By adopting inclusive policies, employers can ensure compliance with the Equality Act 2010 while fostering a culture that truly values diversity and inclusion.



3. Disclosure

Many neurodivergent individuals choose not to disclose their condition in the workplace, often due to fear of discrimination or negative assumptions. Common reasons for withholding this information include:

- **Privacy matter**

Some employees view their neurodivergence as a private matter and may not want to share it with others, particularly in a professional setting.

- **Stereotypes and stigma**

Misunderstandings and stereotypes about neurodivergent conditions can lead to stigmatisation. Employees may fear being judged or treated differently if they disclose this.

- **Impact on career progression**

There may be concerns that disclosing neurodivergence will negatively affect their career prospects, including opportunities for further training, promotion or general advancement.

- **Lack of support**

If employees perceive that their workplace lacks adequate policies and procedures to support neurodivergent individuals, they may choose not to disclose their condition. Often due to a sense that support is unlikely and questioning whether it's worth the effort.

Creating a neuro-inclusive environment helps address these challenges. An inclusive culture promotes openness, reduces stigma, and ensures employees receive the support they need to thrive—without fear of negative consequences.



4. Available guidance

PAS 6463 – Design for the Mind: Neurodiversity and the Built Environment provides an opportunity to re-evaluate workplace design, to better support neurodivergent individuals while promoting inclusivity for all. Key recommendations include:

- **Sensory regulation**

Many neurodivergent individuals are highly sensitive to sensory stimuli, such as lighting, noise or colour. PAS 6463 suggests using adjustable lighting, noise-reducing materials and creating quiet spaces to help employees manage sensory overloads.

- **Clear layouts**

Complex or cluttered office layouts can be disorientating for neurodivergent individuals. PAS 6463 emphasises the importance of clear signage, easy navigations and consistent visual cues to enhance spatial orientation.

- **Flexible workspaces**

Providing options for both collaborative and solitary work environments can help neurodivergent employees feel more comfortable and productive. Flexible furniture and zoning can allow for this adaptability.

- **Privacy considerations**

Neurodivergent individuals may have different needs when it comes to privacy and interaction with others. Creating spaces that allow for varying levels of social interaction can help reduce anxiety and improve well-being.

Implementing these types of design features or making reasonable adaptations by following guidance such as, PAS 6463 and British Standard 8300, not only supports neurodivergent employees, but it also enhances the entire workplace. Inclusive design drives higher engagement and moral, boosts productivity, and strengthens an organisation's reputation as an employer of choice.

With growing awareness and the introduction of practical framework for inclusive design, now is the time for employers to prioritise neurodiversity in their strategies for diversity and inclusion. By doing so, we can foster a more equitable, enjoyable and dynamic workplace for all.

Assurity Consulting is the UK's leading independent consultancy specialising in workplace health, safety and environmental solutions. As your partner in compliance management you will reap the benefit of our more than 35 years' experience of helping customers across a range of different sectors – manage their compliance responsibilities as effectively as possible. If you need any help with your health, safety or environmental compliance, or if you would like more information on the services Assurity Consulting offer, please get in touch.



Call us on
+44 (0)1403 269375



Email us at
info@assurityconsulting.co.uk



Visit our website
assurityconsulting.co.uk